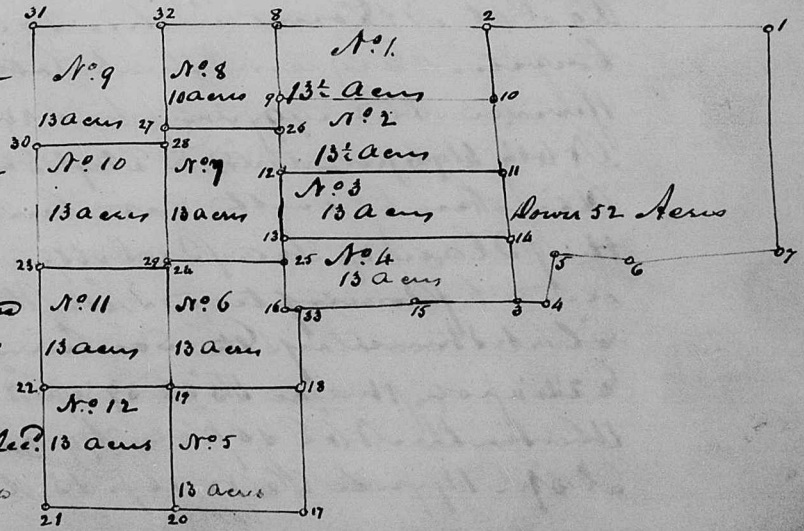


Wheat
 May Abot.
 Down and
 Division of
 Land

Merces County S. B.
 In Obedience to an
 Order of the Worshipful
 County Court of Merces
 made at their March
 County Court 1841 ap.
 pointing the unassigned
 Commissioners to allot
 Down to May Wheat
 widow of Jo. Wheat Dec.
 and divide & Allot to each



him his portion in the residue of said Deeds Land we
 met on the 10th day of March 1841 and attested to Mary
 Wheat Widow & Relief of Joseph Wheat Dec. & his heirs
 in his said husband's Land as follows to wit. Beginning
 at Figure 1 a white Oak and black Oak and running from
 thence S 62° W 100 poles to Figure 2 a Stake thence S 35° E 102
 poles to Figure 3 a Stake thence N 61° E 82 poles to Figure
 4 in the Center of the Turnpike road thence N 11° S 50
 road N 22° W 18 poles to Figure 5 a Stake thence leaving
 the road N 67° E 27 poles to Figure 6 a Stake thence N 56°
 E 55 poles to Figure 7 a white Oak thence N 31° W 81 poles
 to the Beginning Containing 52 Aers including the
 mansion house it being an equal third part in
 Value of a Tract of Land of 205 Aers of which the said
 Joseph Wheat died seized and possessed lying in Allen
 County on the waters of Salt river

And in Obedience to said Order & promised to divide
 the remainder of Deeds Land amongst his several Children
 & Heirs as follows to wit, To Peter Clayton Wheat We have
 allotted by Lot N^o 1 Containing 13½ Aers and is bound-
 ed as follows Beginning at Figure 8 a Stake thence
 S 30° E 28 poles to Figure 9 a Stake thence N 62° E 77 poles
 to Figure 10 a Stake thence N 35° W 28 poles to the Begin-
 ning

To Richard A Wheat we have allotted by Lot Lot
 N^o 2 Containing 13½ Aers and bounded as follows
 Beginning at Figure 10 a Stake in the down line a
 Corner to Lot N^o 1 and running from thence S 62° W 77
 poles to Figure 9 a Stake thence S 30° E 28 poles to Figure
 12 a Stake N 62° E 78 poles to Figure 11 a Stake in the down
 line thence N 35° W 28 poles to the Beginning

To Martha Wheat we have allotted by Lot Lot
 N^o 3 Containing 13 Aers and bounded as follows
 Beginning at Figure 11 a Stake in the down line corner
 to Lot N^o 2 and running from thence S 62° W 78 poles to
 Figure 12 a Stake thence S 30° E 25 poles to Figure 13 a Stake
 thence N 62° E 79 poles to Figure 14 a Stake in the down
 line thence N 35° W 24 poles to the Beginning

To John Roberson and Nancy his wife late Nancy
 Wheat, we have allotted by Lot N^o 4 Containing 13 Aers
 and bounded as follows Beginning at Figure 14 a
 Stake in the down line a Corner to Lot N^o 3 and
 running from thence S 62° W 79 poles to Figure 13 a
 Stake thence S 30° E 27 poles to Figure 16 a Stake thence
 N 57° E 47 poles to Figure 15 a Stake thence N 61° E 37 poles

to Figure 3 a Stake Corner to the Down then North to the Down line N 35° W 24 poles to the Beginning —

To Joseph Wheat we have allotted by Lot Lot N° 5 Containing 13 Aers and bounded as follows Beginning at Figure 17 a Stone Corner to John Rochester Roberts then N 30° W 45 poles to Figure 18 a Stake then S 61° W 46 poles to Figure 19 a Stake then S 30° E 45 poles to Figure 20 a Stake in Harry Cunninghams line then his line N 61° E 46 poles to the Beginning —

To Harrote Wheat we have allotted by Lot Lot N° 6 Containing 13 Aers and bounded as follows Beginning at Figure 18 a Stake Corner to Lot N° 5 then N 30° W 30 poles to Figure 23 then white Oaks Corner to John Roberts in a line of Lot N° 4 then S 57° W 5 poles to Figure 16 a Stake then N 30° W 17 poles to Figure 25 a Stake then S 61° W 41 poles to Figure 29 a Stake then S 30° E 47 poles to Figure 19 a Stake Corner to Lot N° 5 then with a line of the same N 61° E 46 poles to the Beginning —

To Andrew Ramsdell and Mary Ann his wife late Mary Ann Wheat we have allotted by Lot Lot N° 7 Containing 13 Aers and bounded as follows Beginning at Figure 25 a Stake in a line of Lot N° 4 and running from then N 30° W 49 poles to Figure 26 a Stake then S 61° W 41 poles to Figure 27 a Stake then S 30° E 49 poles to Figure 29 a Stake then N 61° E 41 poles to the Beginning —

To William Ramsdell and Susan his wife late Susan Wheat we have allotted by Lot Lot N° 8 Containing 10 Aers and is bounded as follows Beginning at Figure N° 26 a Stake in a line of Lot N° 2 Corner to Lot N° 7 and running from then N 30° W 39 poles to Figure 8 a Stake Corner to Lot N° 1 then S 61° W 41 poles to Figure 32 a Stake then S 30° E 39 poles to Figure 27 a Stake then N 61° E 41 poles to the Beginning —

To Harry Wheat we have allotted by Lot N° 9 Containing 13 Aers and bounded as follows Beginning at Figure 31 a white Oak and Hickory stump an Original Corner then S 30° E 45 poles to Figure 30 a Stake then N 61° E 46 poles to Figure 28 a Stake in a line of Lot N° 7 then N 30° W 45 poles to Figure 32 a Stake then S 61° W 46 poles to the Beginning —

To Sarah Wheat we have allotted by Lot Lot N° 10 Containing 13 Aers and is bounded as follows Beginning at Figure 30 a Stake Corner to Lot N° 9 in an Original line then S 30° E 45 poles to Figure 23 a Stake in said line then N 61° E 46 poles to Figure 24 a Stake then N 30° W 45 poles to Figure 28

To Lucia's Wharf we have allotted by Lot N^o 11
 Containing 13 aers and bounded as follows Begin-
 ning at Figure a Stake Corner to Lot N^o 10 in an
 Original line thence with said line S 30^o E 46 poles to
 Figure 22 a Stake thence N 61^o E 46 poles to Figure 19 a
 Stake thence N 30^o W 45 poles to Figure 24 a Stake
 thence S 61^o W 46 poles to the Beginning

To Aldron's Wharf we have allotted by Lot Lot
 N^o 12 Containing 10 aers and bounded as follows
 Beginning at Figure 22 a Stake Corner to Lot N^o 11
 in a line of the Old Survey thence with said line
 S 30^o E 45 poles to Figure 21 a white Oak an Original
 Corner thence with the Old line N 61^o E 46 poles to
 Figure 20 a Stake Corner to Lot N^o 5 thence a line
 of the same N 30^o W 45 poles to Figure 19 a Stake thence
 S 61^o W 46 poles to the Beginning all of which lots
 we consider equal in Value to each other and
 Submit the foregoing as our report Respectfully -

James W. Washburn S. M. C. P.

Levin Holman

Armsted Downing

Rich^d. Holman

Allen County vs. May County Court 1841

The foregoing allotment of land and divis-
 ion of land was this day produced into Court
 and ordered to be recorded

Attest Tho. Allen &c.